



“my
Reference,,

CREATION 55

Gerflor[®]
theflooringgroup

SWISS OAK

CREATION 55 GLUE DOWN



PERMANENT ADHESIVE
COLLAGE PERMANENT
VOLLFLÄCHIGE
VERKLEBUNG

CREATION 55 CLIC



INTERLOCKING
CLIPSABLE
KLICKSYSTEM






5X MORE RESISTANT 30% FASTER

CREATION 55 LOOSELAY / LOOSELAY ACOUSTIC*



LOOSELAY - REMOVABLE
PLOMBANT-
REPOSITIONNABLE
LOSE VERLEGUNG-
WIEDERAUFNEHMBAR

DESIGN SHADE VARIATION / NIVEAU DE CONTRASTE DU DÉCOR / KONTRASTSTÄRKE DES DESIGNS

-  LIGHT / LÉGER / GERING
-  MEDIUM / MOYEN / MITTEL
-  HIGH / FORT / HOCH

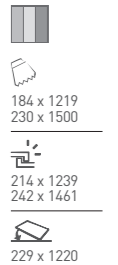
COLOR DESIGN	CODE	CREATION 55	CREATION 55 CLIC	CREATION 55 LOOSELAY / LOOSELAY ACOUSTIC	SKIRTINGS / PLINTHES / SOCKELLEISTEN (MATCHING DESIGNS)	PAGE
AMADOR	0447	■	■	■	■	S004 07
ARENA	0060	■	■	■	■	S026 11
BALLERINA	0347	■	■	■	■	S008 22
CARMEL	0618	■	■	■	■	S020 38
HONEY OAK	0441	■	■	■	■	S033 17
LONG BOARD	0455	■	■	■	■	S034 16
MALUA BAY	0448	■	■	■	■	S035 12
NORVEGIAN STONE	0860	■	■	■	■	S042 36
PARKER STATION	0374	■	■	■	■	S047 35
RANCH	0456	■	■	■	■	S053 06
SWISS OAK GOLDEN	0796	■	■	■	■	S015 03
SWISS OAK PEARL	0846	■	■	■	■	S014 03
TWIST	0504	■	■	■	■	S039 15
AMARANTE	0579	■	■	■	■	S005 24
ASPEN	0458	■	■	■	■	S006 30
BLOOM GREY	0867	■	■	■	■	S069 41
BLOOM TAUPE	0866	■	■	■	■	S070 41
BLOOM UNI GREY	0869	■	■	■	■	S071 41
BLOOM UNI TAUPE	0868	■	■	■	■	S072 41
BOSTONIAN OAK	0871	■	■	■	■	S016 04
BOSTONIAN OAK BEIGE	0853	■	■	■	■	S017 04
BOSTONIAN OAK GREY	0855	■	■	■	■	S018 04
BOSTONIAN OAK HONEY	0851	■	■	■	■	S019 04
BROWNIE	0459	■	■	■	■	S073 28
BUFFALO	0457	■	■	■	■	S075 29
CAMBRIDGE	0465	■	■	■	■	S065 21
CARRARE	0744	■	■	■	■	S021 42
CEDAR BROWN	0850	■	■	■	■	S024 18
CEDAR PURE	0849	■	■	■	■	S025 18
DURANGO TAUPE	0751	■	■	■	■	S027 32
ERAMOSIA BEIGE	0863	■	■	■	■	S028 43
MICHIGAN	0461	■	■	■	■	S038 27
OXFORD	0061	■	■	■	■	S043 08
PAINT WOOD TAUPE	0856	■	■	■	■	S046 14
QUARTET	0503	■	■	■	■	S056 23
QUARTET FAUVE	0859	■	■	■	■	S057 23
REGGIA IVORY	0861	■	■	■	■	S054 37
RIVERSIDE	0436	■	■	■	■	S032 39
RUST CORTEN	0095	■	■	■	■	S044 31
RUSTIC OAK	0445	■	■	■	■	S062 25
SILVER CITY	0373	■	■	■	■	S048 34
STACCATO	0476	■	■	■	■	S064 33
STRIPE OAK HONEY	0857	■	■	■	■	S010 26
STRIPE OAK ICE	0858	■	■	■	■	S009 26
SWISS OAK BEIGE	0848	■	■	■	■	S011 03
SWISS OAK CASHMERE	0795	■	■	■	■	S012 03
SWISS OAK SMOKED	0847	■	■	■	■	S013 03
WHITE LIME	0584	■	■	■	■	S074 13
PONTO CRUZ CITY	0878	■	■	■	■	S052 40
PONTO CRUZ NAVY	0876	■	■	■	■	S051 40
CHEVRON BUCKWHEAT	0811	■	■	■	■	S029 09
CHEVRON HURRICANE	0809	■	■	■	■	S030 09
CHEVRON MOKA	0810	■	■	■	■	S031 09
MANSFIELD LIGHT	0068	■	■	■	■	S036 10
MANSFIELD NATURAL	0069	■	■	■	■	S037 10
NORTHWOOD MACCHIATO	0816	■	■	■	■	S040 19
NORTHWOOD MOKACCINO	0817	■	■	■	■	S041 19
QUARTET HONEY	0870	■	■	■	■	S058 23
REGGIA TAUPE	0862	■	■	■	■	S055 37
ROYAL OAK BLOND	0812	■	■	■	■	S060 20
ROYAL OAK COFFEE	0740	■	■	■	■	S061 20
RUST METAL	0094	■	■	■	■	S045 31
VINTAGE OAK	0426	■	■	■	■	S063 05

■ : Available / Disponible / Verfügbar

LRV/LVR on gerflor.com



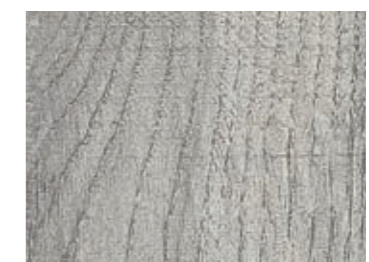
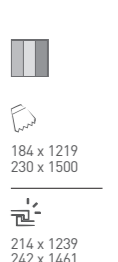
SWISS OAK GOLDEN
0796



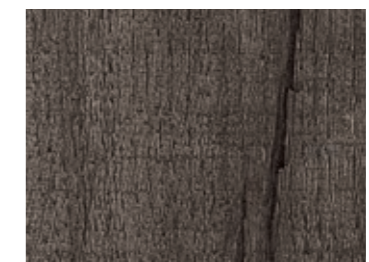
SWISS OAK BEIGE
0848



SWISS OAK CASHMERE
0795



SWISS OAK PEARL
0846



SWISS OAK SMOKED
0847



BOSTONIAN OAK



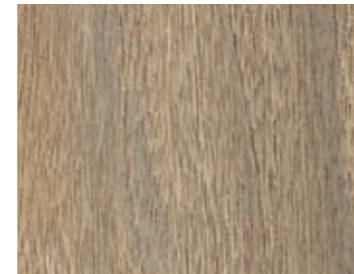
BOSTONIAN OAK HONEY
0851



184 x 1219
230 x 1500



214 x 1239
242 x 1461



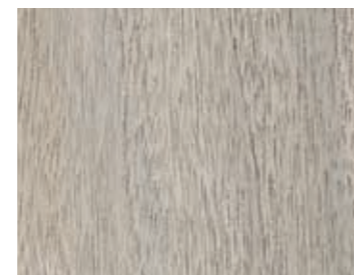
BOSTONIAN OAK
0871



184 x 1219



214 x 1239



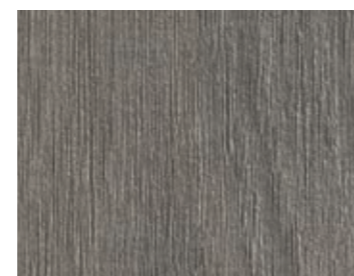
BOSTONIAN OAK BEIGE
0853



184 x 1219
230 x 1500



214 x 1239
242 x 1461



BOSTONIAN OAK GREY
0855



184 x 1219
230 x 1500



214 x 1239
242 x 1461

Format / mm

BOSTONIAN OAK BEIGE

VINTAGE OAK



VINTAGE OAK
0426



184 x 1219

Format / mm

VINTAGE OAK

RANCH



RANCH
0456



184 x 1219
230 x 1500



214 x 1239
242 x 1461



229 x 1220



AMADOR



AMADOR
0447



184 x 1219



214 x 1239



229 x 1220



OXFORD



OXFORD
0061



184 x 1219



214 x 1239



OXFORD

Format / mm

CHEVRON



CHEVRON MOKA
0810



184 x 1219



CHEVRON BUCKWHEAT
0811



184 x 1219



CHEVRON HURRICANE
0809



184 x 1219



CHEVRON HURRICANE

Format / mm

MANSFIELD



MANSFIELD LIGHT
0068



184 x 1219



MANSFIELD LIGHT



MANSFIELD NATURAL
0069



184 x 1219

Format / mm

ARENA



ARENA
0060



184 x 1219



214 x 1239



229 x 1220



ARENA / LONG BOARD

Format / mm

MALUA BAY



MALUA BAY
0448



184 x 1219



214 x 1239



229 x 1220



WHITE LIME



WHITE LIME
0584



184 x 1219



214 x 1239



PAINT WOOD TAUPE



PAINT WOOD TAUPE
0856



184 x 1219



214 x 1239



PAINT WOOD TAUPE

Format / mm

TWIST



TWIST
0504



184 x 1219



214 x 1239



229 x 1220



TWIST

Format / mm

LONGBOARD



LONGBOARD
0455



184 x 1219



214 x 1239



229 x 1220

HONEY OAK



HONEY OAK
0441



184 x 1219



214 x 1239



229 x 1220



CEDAR



CEDAR PURE
0849



230 x 1500

242 x 1461



CEDAR BROWN
0850



230 x 1500

242 x 1461

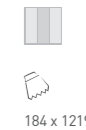


CEDAR PURE

NORTHWOOD



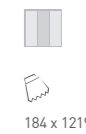
NORTHWOOD MACCHIATO
0816



184 x 1219



NORTHWOOD MOKACCINO
0817



184 x 1219

NORTHWOOD MOKACCINO

ROYAL OAK



ROYAL OAK BLOND
0812



184 x 1219



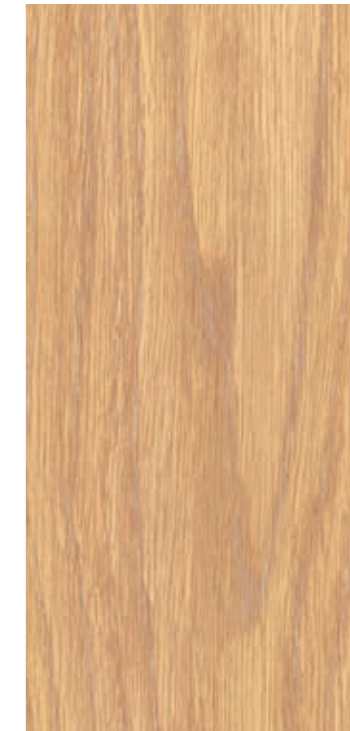
ROYAL OAK COFFEE
0740



184 x 1219

Format / mm

CAMBRIDGE



CAMBRIDGE
0465



184 x 1219






214 x 1239

Format / mm

BALLERINA



BALLERINA
0347


 184 x 1219
 152 x 762

 214 x 1239

 229 x 1220





BALLERINA / CARMEL

Format / mm

QUARTET



QUARTET
0503


 184 x 1219
 152 x 762

 214 x 1239



QUARTET

Format / mm





QUARTET FAUVE
0859


 184 x 1219

 214 x 1239



QUARTET HONEY
0870


 184 x 1219


AMARANTE



AMARANTE
0579



184 x 1219



214 x 1239

RUSTIC OAK



RUSTIC OAK
0445



184 x 1219



214 x 1239



STRIPE OAK



STRIPE OAK HONEY
0857



184 x 1219



214 x 1239



STRIPE OAK HONEY



STRIPE OAK ICE
0858



184 x 1219



214 x 1239

Format / mm

MICHIGAN



MICHIGAN
0461



184 x 1219



214 x 1239



MICHIGAN

Format / mm

BROWNIE



BROWNIE
0459



184 x 1219



214 x 1239

BUFFALO



BUFFALO
0457



184 x 1219



214 x 1239



ASPEN



ASPEN
0458



184 x 1219



214 x 1239



ASPEN

Format / mm

RUST



RUST CORTEN
0095



457 x 914



391 x 729



RUST CORTEN

Format / mm

RUST METAL
0094



457 x 914

DURANGO TAUPE



DURANGO TAUPE
0751



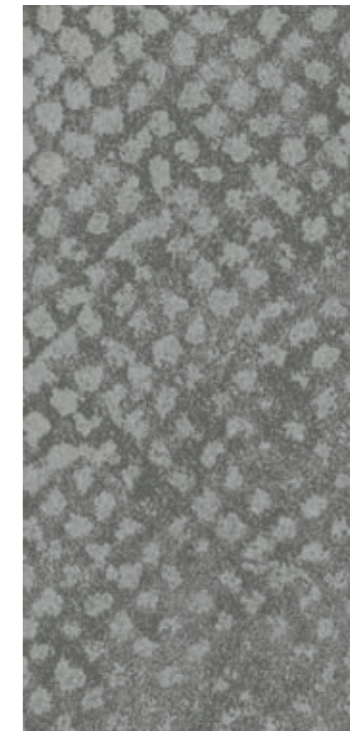
610 x 610



391 x 729



STACCATO



STACCATO
0476



610 x 610



391 x 729



SILVER CITY



SILVER CITY
0373



610 x 610



391 x 729

PARKER STATION



PARKER STATION
0374



610 x 610



391 x 729



500 x 500



NORVEGIAN STONE



NORVEGIAN STONE
0860



457 x 914



391 x 729



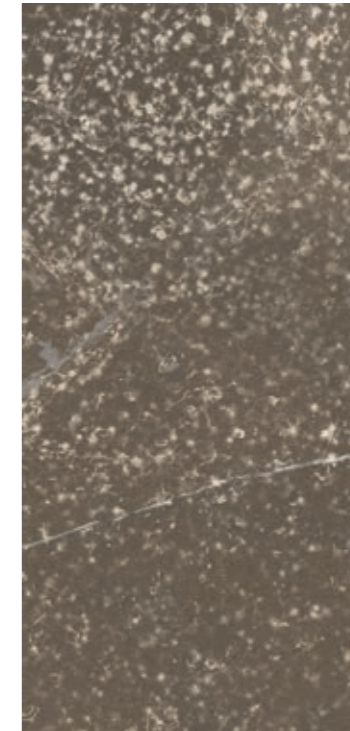
500 x 500



NORVEGIAN STONE

Format / mm

REGGIA



REGGIA TAUPE
0862

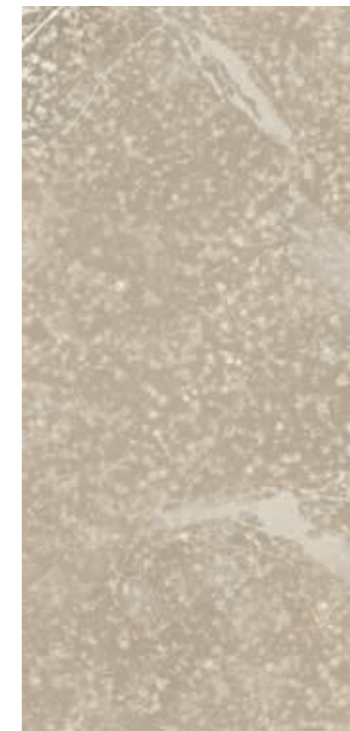


457 x 914



REGGIA TAUPE

Format / mm



REGGIA IVORY
0861

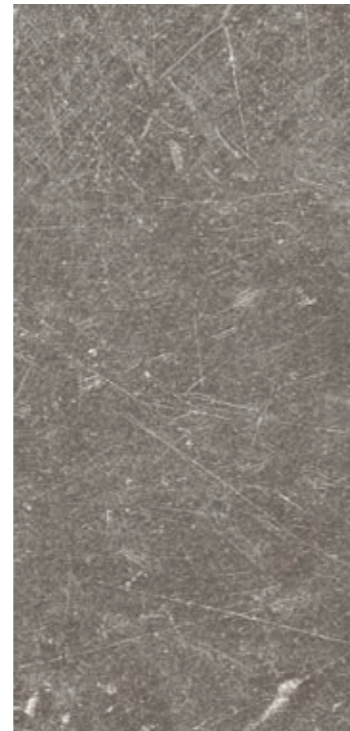


457 x 914



391 x 729

CARMEL



CARMEL
0618



457 x 914



391 x 729



500 x 500

RIVERSIDE



RIVERSIDE
0436



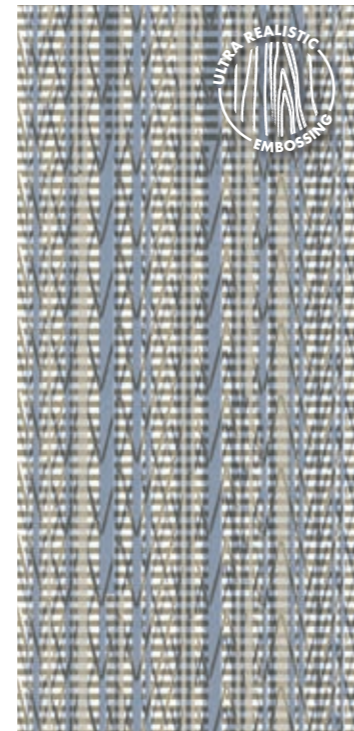
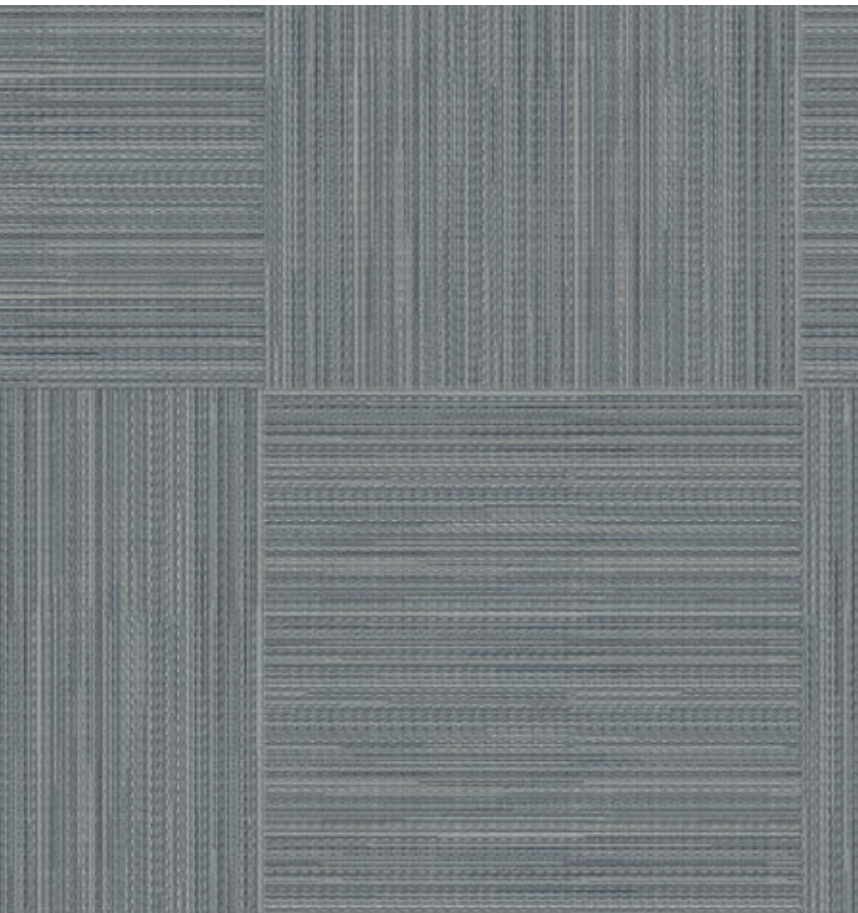
610 x 610



391 x 729



PONTO CRUZ



PONTO CRUZ NAVY
0876

610 x 610
152 x 762
500 x 500



PONTO CRUZ CITY
0878

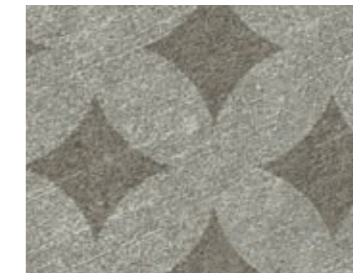
610 x 610
152 x 762
500 x 500



PONTO CRUZ CITY / NAVY

Format / mm

BLOOM



BLOOM TAUPE
0866

610 x 610
391 x 729



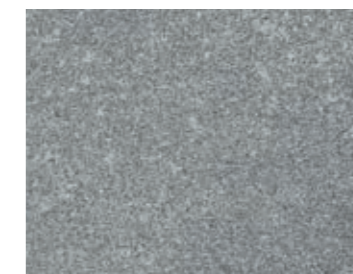
BLOOM UNI TAUPE
0868

610 x 610
391 x 729



BLOOM GREY
0867

610 x 610
391 x 729



BLOOM UNI GREY
0869

610 x 610
391 x 729



BLOOM TAUPE / BLOOM UNI TAUPE

Format / mm

CARRARE



CARRARE
0744



457 x 914



391 x 729



ERAMOSA BEIGE



ERAMOSA BEIGE
0863



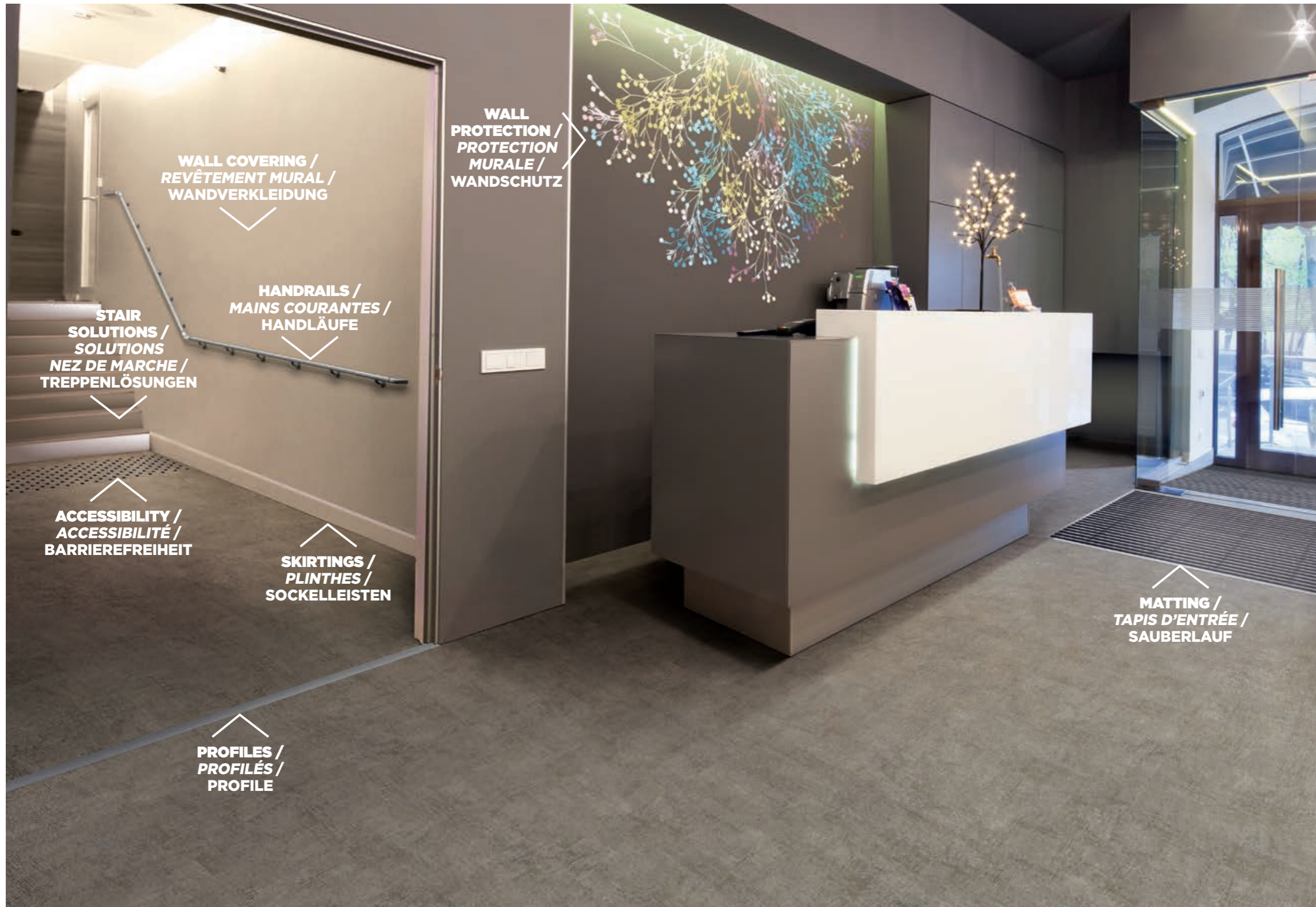
457 x 914



391 x 729



MORE THAN A FLOOR... FLOOR, WALL & FINISHES
PLUS QU'UN SOL... SOLUTIONS COMPLÈTES, SOLS, MURS & FINITIONS
MEHR ALS NUR BELAG... BODEN, WAND & ZUBEHÖR



TOOLS / OUTILS / WERKZEUGE



ADD-ON UNDERLAYERS / SOUS COUCHES COMPLÉMENTAIRES / UNTERLAGEN



FOR MORE DETAILS / PLUS DE DÉTAILS / WEITERE INFORMATIONEN
GERFLOR.COM





* information sur le niveau d'émission de substances volatiles dans l'air intérieur, présentant un risque de toxicité par inhalation, sur une échelle de classe allant de A+ (très faibles émissions) à C (fortes émissions).



DESIGN	TREND	CREATION 55 LOOSELAY	CREATION 55 LOOSELAY ACOUSTIC	CREATION 55 CLIC
--------	-------	----------------------	-------------------------------	------------------

DESCRIPTION / BESCHREIBUNG / BESCHRIJVING / DESCRIPTION / DESCRIPCIÓN / DESCRIZIONE	DESIGN	TREND	CREATION 55 LOOSELAY	CREATION 55 LOOSELAY ACOUSTIC	CREATION 55 CLIC
Total Thickness / Gesamtdicke / Totale dikte / Épaisseur totale / Espesor total / Essatura total / Spessore totale	EN ISO 24346	mm	2.50	4.50	5.00
	ASTM F386-02	inch	0.10	0.18	0.20
Thickness of the wearlayer / Dicke der Nutzschrift / Dikte van de slijtlaag / Épaisseur couche d'usure / Espesor capa de uso / Essatura camada de desgaste / Spessore strato di usura	EN ISO 24340	mm	0.55	0.55	0.55
	ASTM F410-02	inch	0.02	0.02	0.02
Weight / Flächengewicht / Gewicht / Poids / Peso / Peso / Peso	EN ISO 23997	g/m ²	4410	3850	7500
	ISO 24342	mm	184x1219 / 230x1500 152x762	184x1219 / 230x1500 152x762	229x1220 500x500
	ASTM F 536	inch	7.25"x48" / 9" x59" 6"x30" / 18"x36" / 24"x24"	7.25"x48" / 9" x59" 6"x30" / 18"x36" / 24"x24"	9" x48" 19.7" x19.7"

CLASSIFICATION / KLASSIFIKATION / CLASSIFICATIE / CLASSIFICATION / CLASIFICACIONES / CLASSIFICAÇÕES / CLASSIFICAZIONI	DESIGN	TREND	CREATION 55 LOOSELAY	CREATION 55 LOOSELAY ACOUSTIC	CREATION 55 CLIC
Norm/Product Specification / Produktnorm / Technische eigenschappen / Norme/Specification produit / Normas / Normas / Norma prodotto	-	-	EN ISO 10582	EN ISO 10582	EN ISO 10582
	ASTM F 1700-04	-	Class III Type B	Class III Type B	-
European Classification / Europäische Klassifizierung / Europese classificatie / Classement européen / Classificación europea / Classificação Europeia / Europea	EN ISO 10874	Class	33 - 42	33 - 42	33 - 42
Classement UPEC	-	-	U3P3E2C2	U3P3E2C2	U3P3E1/2C2
Certification (evaluation.cstb.fr)	QB 30	n°	783/356-004.1	355-002.1	-
Avis technique	-	n° AT	-	-	12/19-1786_V2
Appréciation Technique Expérimentale	-	n° Atex	-	-	2769_V1
Fire Rating / Brandverhalten / Brand classificatie / Classement Feu / Fuego / Fogo / Reazione al fuoco	EN 13 501-1	Class	Bfl-s1	Bfl-s1	Bfl-s1
Static Electrical Propensity / Begehaufladung / Elektrische eigenschappen / Potentiel de charge / Comportamiento electrostático / Comportamento electrostático / Resistenza elettrica	EN 1815	kV	< 2	< 2	< 2
Slip Resistance Wet / Rutschhemmung / Anti-slip / Glissance humide / Deslizamiento húmedo / Escorregamento húmido / Scivolosità umida¹⁾	DIN 51130 / BGR 181	Class	R10	R10	R10

PERFORMANCES / TECHNISCHE EIGENSCHAFTEN / TESTRESULTAAT / PERFORMANCE / CUALIDADES TÉCNICAS / PERFORMANCES / CARATTERISTICHE TECNICHE	DESIGN	TREND	CREATION 55 LOOSELAY	CREATION 55 LOOSELAY ACOUSTIC	CREATION 55 CLIC
Wear Resistance / Verschleißverhalten / Slijtvastheid / Résistance à l'usure / Abrasion / Abrasão / Resistenza all'abrasione	EN 660.2	mm ³	≤ 2.0	≤ 2.0	≤ 2.0
Wear Group / Verschleißgruppe / Groep slijtvasheid / Groupe d'abrasion / Grupo de abrasión / Grupo de abrasão / Gruppo di abrasione	QB 30	group	T	T	T
Type Binder content / Bindemittelgehalt / Teneur en agent liant / Contenido en ligante / Conteúdo em ligante	ISO 10582	group	I	I	I
Dimensional stability (norm) / Maßstabilität (norm) / Maatvastheid (norm) / Stabilité dimensionnelle (norme) / Estabilidad Dimensional (Exigencia) / Estabilidade dimensional (normalização) / Stabilità dimensionale (requisito normativo)	EN ISO 23999	%	≤ 0.25	≤ 0.25	≤ 0.15
Dimensional stability (average measured value) / Maßstabilität (Durchschnittswert) / Stabilité dimensionnelle (valeur moyenne mesurée) / Maatvastheid (gemeten gemiddelde waarde) / Estabilidad Dimensional (Valor medido) / Estabilidade Dimensional (Valor medio) / Stabilità dimensionale (rilevata)	-	%	≤ 0.10	≤ 0.10	≤ 0.05
Residual Indentation / Resteindruck / Indrukbelasting / Poinçonnement statique rémanent / Punzonamiento / Punçoamento / Impronta	EN ISO 24343-1	mm	≤ 0.10	≤ 0.10	≤ 0.10
Impact sound insulation / Trittschallverbesserungsmaß / Geluidsisolatie / Isolation acoustique bruits de chocs / Acústica / Isolamento acústico	EN ISO 717-2	dB	4	4	7
Room Impact / Raumschall / Loopgeluid / Sonorité à la marche / Rumore al calpestio / Sonoridad en la pisada / Sonoridade ao andar	NF S 31074	dB	77	77	73
Castor chair test / Stuhlrollenbeanspruchung / Rolweerstand bureaustoelen / Essai de la chaise à roulettes / Determinación del efecto de una silla con ruedas / Resistência a cadeiras de rodas / Resistenza al passaggio di sed (Type H)	ISO 4918	-	OK	OK	OK
Thermal Conductivity / Wärmeleitfähigkeit / Thermische weerstand / Conductivité thermique / Conductividad térmica / Condutividade térmica / Resistenza termica / Värmeledningsmotstånd / Värmestånd	EN ISO 10456	W/(m.K)	0.25	0.25	0.25
Colour Fastness / Lichtechtheit / Lichtechtheid / Solidité lumière / Resistencia a la luz / Estabilidade das cores / Solidità alla luce	EN 20 105 - B02	degree	≥ 6	≥ 6	> 6
Surface Treatment / Oberflächenvergrütung / Oppervlaktebehandling / Traitement de surface / Tratamiento de superficie / Tratamento de superficie / Trattamento di superficie	-	-	PUR+ Matt	PUR+ Matt	PUR+ Matt
Chemical Products Resistance / Verhalten gegenüber Chemikalien / Chemische bestendigheit / Résistance aux produits chimiques / Resistencia a los productos químicos / Resistência aos produtos químicos / Resistenza ai prodotti chimici²⁾	EN ISO 26987	-	OK	OK	OK

ENVIRONMENT/INDOOR AIR QUALITY / UMWELT/RAUMLUFTQUALITÄT / ENVIRONNEMENT/QUALITE DE L'AIR INTERIEUR / MEDIO AMBIENTE/CALIDAD INTERIOR DEL AIRE INTERIOR / MEIO AMBIENTE/QUALIDADE DO AR INTERIOR	DESIGN	TREND	CREATION 55 LOOSELAY	CREATION 55 LOOSELAY ACOUSTIC	CREATION 55 CLIC
TVOC after 28 days / TVOC (28 Tage) / TVOC (28 dagen) / TVOC après 28 jours / TVOC (28 dias) / TVOC (28 dias) / TVOC (28 giorni) / TVOC (28 dagar) / TVOC (28 dager)	ISO 16000-6	micrograms/m ³	< 10	< 10	< 10
Certification / Zeugnis / Certification / Certificado / Certificação	-	-	Floorscore®	-	Floorscore®

CE MARKING / CE KENNZEICHNUNG / EG_CONFORMITEITSMERK / MARQUAGE CE / MARCA DE CONFORMIDAD CE / MARCA DE CONFORMIDADE CE / MARCATURA CE DI CONFORMITA	DESIGN	TREND	CREATION 55 LOOSELAY	CREATION 55 LOOSELAY ACOUSTIC	CREATION 55 CLIC
CE	EN 14041	-			

WE CARE | WE ACT. Our commitments for a sustainable future

CARBON FOOTPRINT*	BIOSOURCED CONTENT**	RECYCLED CONTENT	ADHESIVE FREE***	ANNUAL VOLUME RECYCLED
-20 % kg CO ₂ equivalent/m ² between 2020 and 2025	10 % by 2025	30 % by 2025	35 % by 2025	60,000 t by 2025

* Scopes 1 & 2 defined in the GHG protocol ** % of activity with biosourced materials *** % of activity with adhesive free solutions

INTERIOR DESIGNER



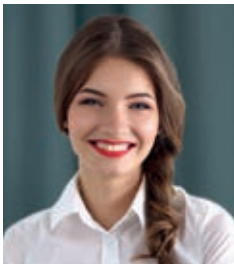
interiordesigner.gerflor.com

30 years experience
Since 1985

Manufacturer
3 LVT Factories

World Class Logistics
12 Logistics Hubs

Gerflor Design Centre
Exclusive Designs



“Serenity,,
Julia - **End User**



“Time saving,,
Mika - **Installer**



“Design,,
Pierre - **Architect**



“Confidence,,
Claire - **Store Manager**



“Reliability,,
Lucas - **Distributor**

Gerflor is our **Reference**